

Material: HDPE - PE4710/3608/100

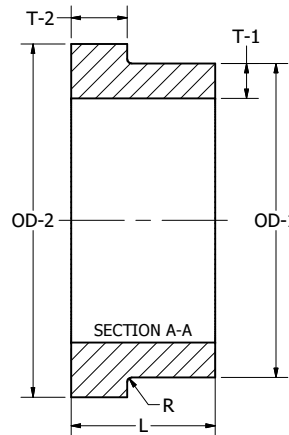
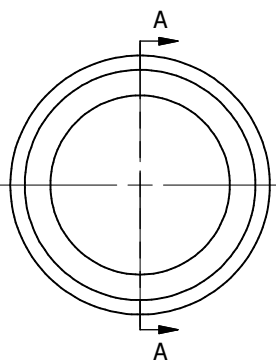
REVISION HISTORY			
REV	DESCRIPTION	DATE	DESIGNER
1	VALID - ORIGINAL DWG	05/19/11	
2	EDIT L COLUMN	07/27/11	
3	EDIT T-2 DIMENSIONS	09/02/11	Matthew
5	UPDATE TOLERANCE ON SUBMITTAL SHEET	3/6/2013	JEREMY GARZA
6	CORRECT EDITS	5/16/2013	JEREMY GARZA

Wall Thickness and Hub Height (2" - 16")																					
		SDR's																			
		7		9		11		13.5		15.5		17		19		21		26		32.5	
Size		T-1	T-2	T-1	T-2	T-1	T-2	T-1	T-2	T-1	T-2	T-1	T-2	T-1	T-2	T-1	T-2	T-1	T-2	T-1	T-2
2		0.339	0.450	0.264	0.400	0.216	0.402	0.176	0.402	0.153	0.402	0.138	0.402	0.125	0.402	0.113	0.402	0.091	0.402	0.073	0.402
3		0.500	0.600	0.389	0.598	0.319	0.598	0.259	0.598	0.226	0.598	0.205	0.598	0.184	0.598	0.167	0.598	0.135	0.598	0.108	0.598
4		0.642	1.000	0.500	0.800	0.409	0.800	0.333	0.800	0.290	0.800	0.264	0.800	0.237	0.800	0.214	0.800	0.173	0.800	0.138	0.800
6		0.945	1.200	0.736	0.920	0.602	0.799	0.491	0.799	0.427	0.799	0.390	0.799	0.349	0.799	0.315	0.799	0.255	0.799	0.204	0.799
8		1.232	1.598	0.958	1.200	0.783	0.799	0.639	0.799	0.556	0.799	0.508	0.799	0.454	0.799	0.411	0.799	0.332	0.799	0.265	0.799
10		1.535	1.900	1.194	1.490	0.976	1.299	0.796	1.299	0.694	1.299	0.634	0.902	0.566	0.902	0.512	0.902	0.413	0.902	0.331	0.902
12		1.823	2.299	1.417	1.770	1.159	1.500	0.944	1.500	0.823	1.500	0.752	1.000	0.671	1.000	0.607	1.000	0.490	1.000	0.392	1.000
14		2.000	2.598	1.556	1.950	1.272	1.701	1.037	1.701	0.903	1.701	0.823	1.098	0.737	1.098	0.667	1.098	0.538	1.098	0.431	1.098
16		2.287	3.000	1.778	2.220	1.453	1.902	1.185	1.902	1.032	1.902	0.941	1.201	0.842	1.201	0.762	1.201	0.615	1.201	0.492	1.201

Flange Adapter Dimensions					
Size	Type	OD-1	OD-2	L	R
2	IPS	2.375	4.000	5.984	0.354
3	IPS	3.500	5.000	5.984	0.354
4	IPS	4.500	6.598	5.984	0.433
6	IPS	6.625	8.500	7.992	0.433
8	IPS	8.625	10.598	9.016	0.433
10	IPS	10.750	12.799	11.000	0.433
12	IPS	12.750	15.252	11.000	0.433
14	IPS	14.000	17.500	11.000	0.433
16	IPS	16.000	20.000	12.000	0.433
18	IPS	18.000	21.098	12.000	0.500
20	IPS	20.000	23.500	12.000	0.500
22	IPS	22.000	25.600	12.000	0.500
24	IPS	24.000	27.900	14.000	0.500
26	IPS	26.000	29.750	14.000	0.500
28	IPS	28.000	32.000	14.000	0.500
30	IPS	30.000	34.000	14.000	0.500
32	IPS	32.000	36.125	14.000	0.500
34	IPS	34.000	38.125	14.000	0.500
36	IPS	36.000	40.500	14.000*	0.500
42	IPS	42.000	47.125	21.000	0.500
48	IPS	48.000	53.500	21.000	0.500
54	IPS	54.000	59.625	21.000	0.500
63	IPS	63.000	66.790	21.000	0.500

*Length is 16.500" for 36" SDR9 only.

Wall Thickness and Hub Height (18" - 63")																					
		SDR's																			
		7		9		11		13.5		15.5		17		19		21		26		32.5	
Size		T-1	T-2	T-1	T-2	T-1	T-2	T-1	T-2	T-1	T-2	T-1	T-2	T-1	T-2	T-1	T-2	T-1	T-2	T-1	T-2
18		2.571	3.858	2.000	2.500	1.636	2.100	1.333	2.100	1.161	2.100	1.059	1.400	0.947	1.250	0.857	1.250	0.692	1.250	0.554	1.250
20		2.857	3.630	2.222	3.490	1.819	2.300	1.481	2.300	1.290	2.300	1.177	1.500	1.053	1.390	0.952	1.390	0.769	1.390	0.615	1.390
22		3.143	3.920	2.444	3.920	2.000	2.500	1.630	2.500	1.419	2.500	1.295	1.600	1.158	1.520	1.048	1.520	0.846	1.520	0.677	1.520
24		3.429	4.360	2.667	4.360	2.181	2.900	1.778	2.900	1.548	2.900	1.413	1.800	1.263	1.667	1.143	1.667	0.923	1.667	0.738	1.667
26		3.714	4.643	2.889	4.643	2.364	2.955	1.926	2.955	1.677	2.955	1.529	2.955	1.368	1.711	1.238	1.711	1.000	1.711	0.800	1.711
28				3.111	5.000	2.545	3.182	2.074	3.182	1.806	3.182	1.647	3.182	1.474	1.842	1.333	1.842	1.077	1.842	0.862	1.842
30				3.333	5.357	2.727	3.409	2.222	3.409	1.935	3.409	1.765	3.409	1.579	1.974	1.429	1.974	1.154	1.974	0.923	1.974
32				3.556	5.714	2.909	3.636	2.370	3.636	2.065	3.636	1.882	3.636	1.684	2.105	1.524	2.105	1.231	2.105	0.985	2.105
34				3.778	6.071	3.091	3.864	2.519	3.864	2.194	3.864	2.000	3.864	1.789	2.237	1.619	2.237	1.308	2.237	1.046	2.237
36				4.000	6.429	3.273	4.091	2.667	4.091	2.323	4.091	2.118	4.091	1.895	2.368	1.714	2.368	1.385	2.368	1.108	2.368
42						3.818	4.773	3.111	4.773	2.710	4.773	2.471	4.773	2.211	2.763	2.000	2.763	1.615	2.763	1.292	2.763
48						4.364	5.455	3.556	5.455	3.097	5.455	2.824	5.455	2.526	3.158	2.286	3.158	1.846	3.158	1.477	3.158
54																2.571	3.553	2.077	3.553	1.662	3.553
63																3.000	4.145	2.423	4.145	1.938	4.145



Notes	
HIGH DENSITY POLYETHYLENE PIPE FITTINGS MANUFACTURED BY IMPROVED PIPING PRODUCTS (IPP) MEET DIMENSIONS, TOLERANCES AND REQUIREMENTS OF ASTM D3261, AWWA C906 AND NSF 61 STANDARD, AS APPROPRIATE. SPECIFICATIONS NOT STATED IN THESE STANDARDS FOLLOW IMPROVED PIPING PRODUCTS STANDARD SPECIFICATIONS."	
DRAWN Matt Graff	5/19/2011
ENG Ellis Clark	3/20/2013
QA Teresa Matias	3/20/2013
IPP IMPROVED PIPING PRODUCTS, INC.	
TITLE IPS Flange Adapter Submittal	
UNLESS OTHERWISE NOTED, ALL DIMENSIONS IN INCHES OR METRIC	SALES NO
SIZE/PART NO C FA SUBMITTAL - IPS	WEIGHT
SCALE	MAT'L: HDPE - PE4710/3608/100
SHEET 1 OF 1	